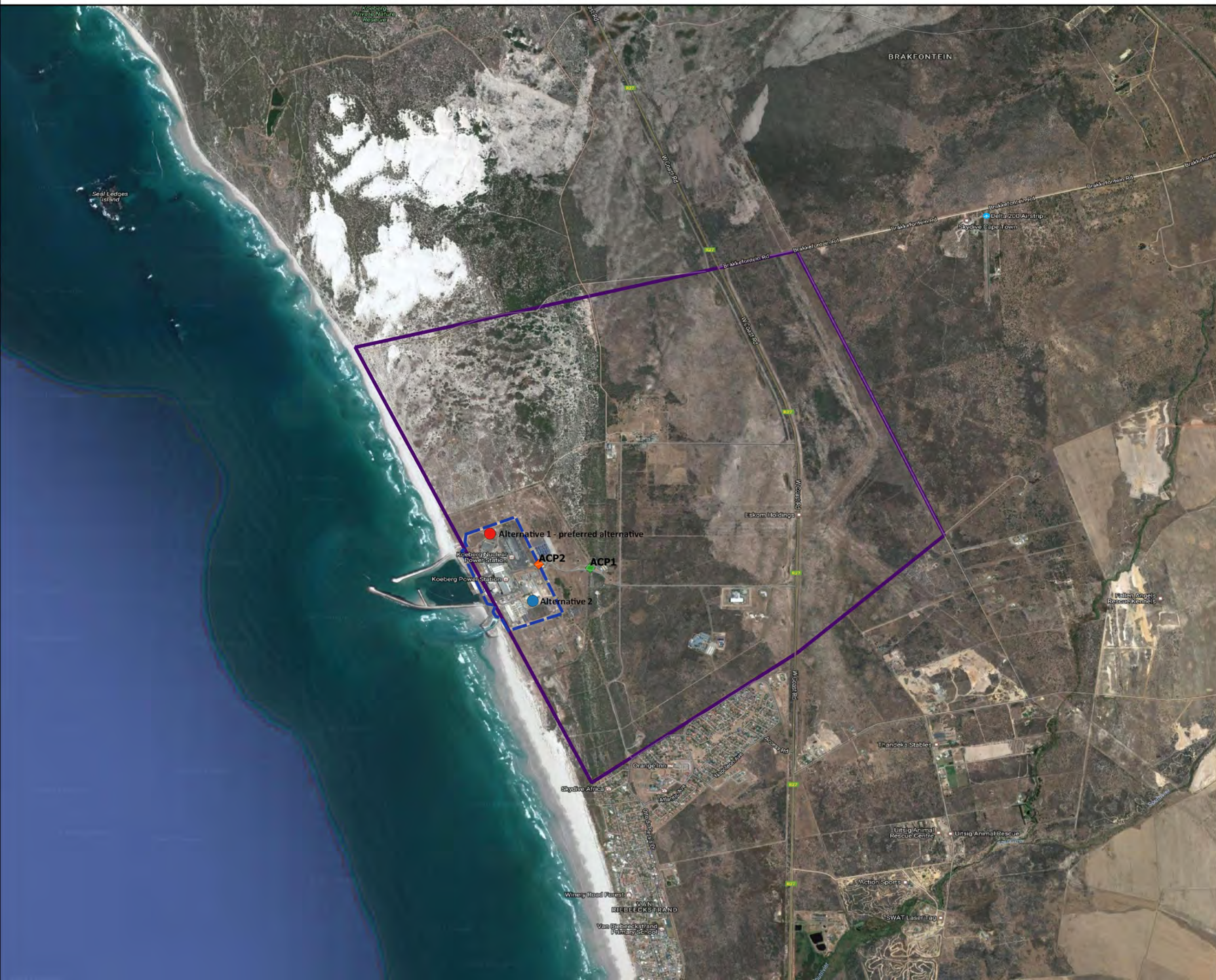


# Proposed Development of a Hardened Water Reservoir and Associated Piping at the Koeberg Nuclear Power Station Located on the Farm Duynefontyn No.1552, Melkbosstrand

## Locality Map



- Legend**
- Alternative 1 - Preferred Alternative
  - Alternative 2
  - Farm Duynefontyn No. 1552
  - KNPS
  - ◆ ACP1
  - ◆ ACP2

**Site Coordinates:**  
 33°40'21.33"S  
 18°25'51.60"E

**Datum:** WGS84  
**Projection:** Geographic

**Scale:** 1:20 000 (on A3)



**Date:** 31 March 2017

**DJEC Ref.** 2015/31

Prepared by:

# Proposed Development of a Hardened Water Reservoir and Associated Piping at the Koeberg Nuclear Power Station Located on the Farm Duynefontyn No.1552, Melkbosstrand

## Locality Map (zoomed in)



- Legend**
- Alternative 1 - Preferred Alternative
  - Alternative 2
  - ▭ Farm Duynefontyn No. 1552
  - ▭ KNPS
  - ◆ ACP1
  - ◆ ACP2

Site Coordinates:  
33°40'21.33"S  
18°25'51.60"E

Datum: WGS84  
Projection: Geographic

Scale: 1:5 000 (on A3)



Date: 31 March 2017

DJEC Ref. 2015/31